



Roots of Peace Annual Report 2012

Mission Statement

Roots of Peace (ROP) is dedicated to ridding the world of landmines and transforming minefields into thriving farmland. Landmines not only kill and maim innocent people but also impede a country's economic recovery and development. Landmine removal is the first step in ROP's mission to restore the livelihood of agricultural communities in mine-affected countries. Since 1997, ROP has worked in eight countries: Afghanistan, Angola, Bosnia-Herzegovina, Cambodia, Croatia, Iraq, the Kyrgyz Republic, Vietnam and the West Bank. In 2012, ROP had active programs in Afghanistan, Vietnam and West Bank.

Roots of Peace is incorporated in the State of California as a humanitarian, not for profit corporation under section 501c3. Main office is located at 990 A Street, Suite 402, San Rafael, California, USA 94901. For more information about Roots of Peace, please see our website at www.rootsofpeace.org.

Our Demine-Replant-Rebuild Model

The innovative Demine-Replant-Rebuild™ model of ROP offers a comprehensive approach to restoring rural agricultural communities to economic self-sufficiency. ROP focuses its efforts in post-conflict countries where agriculture is a fundamental industry and major source of employment. ROP programs clear landmines and remnants of war from fertile farmlands, and develop agricultural infrastructure and routes to markets so farmers can work their fields, process their crops, and sell their produce safely, thereby allowing them to support their families and educate their children. Further, ROP provides technical assistance to farmers and processors, helping them meet the demands of local, regional, and international markets in order to maximize their income. This benefits large numbers of smallholder farmers while stimulating service and supply industries such as trading, credit, processing, distribution, and agricultural input suppliers.





Vietnam

This year has seen the expansion of our efforts and continued success for the Sustainable Horticulture and Agriculture Development Project (SHADE), initiated in Vietnam in 2010. Our work in the provinces of Quang Tri and Ben Phuoc, is projected to have substantial economic benefits for program farmers and their communities. In many cases the groundwork for a prosperous and sustainable income has been put in place, now our focus is to insure that these projects reach their full potential.

In Binh Phuoc, the work that we started only a few years ago has reached its first milestone. The starter packages have been dispersed and the seedlings have taken root. Roots of Peace has assisted in the planting of over 255,000 cacao trees and a core of 850 farmers have been trained to grow and harvest them. When projected yield is taken into account, these farmer's incomes are projected to increase by over 67 percent. This translates into a strong and resilient foothold in the region that has the means and the ability to economically sustain itself and expand its model to other farms in the region.

In the Quang Tri province, SHADE has built on its previous successes and expanded its reach to 494 farmers. Implementing its Mines to Vines model, Roots of Peace has assisted multiple farmers with the removal of unexploded ordinances that contaminate many farms in the region. With the help of Mines Advisory Group, high-risk farms were cleared of the remnants of war, allowing farmers to till their soil in peace. Focusing on the production of pepper, SHADE has facilitated the planting of over 60,000 pepper seedlings. Farmers stand to benefit from a dramatic increase in income that is projected to be over 300 percent. Furthermore SHADE has strengthened the value chain of products produced within the province through increasing communication between farmers, traders, and consumers, as well as increasing the ability of the local governments to assist farmers where necessary.



Israel - West Bank

Mines to Vines in The Holy Land

Today, there are an estimated 1.5 million landmines and unexploded ordnance (UXO) in The Holy Land. These mines hold the land hostage for future generations.

Roots of Peace has raised the funds through a generous donation by Spiriterra Vineyards to turn MINES TO VINES in The Fields of Bethlehem—Husan Village—a Muslim community located only four (4) miles from where Jesus Christ was born.

The year began with a visit to The Fields of Bethlehem to engage the support of the Husan Village in an effort to bring forth interfaith, humanitarian mine action.

This pathway was made possible by the unanimous legislation brought forth at The Knesset by Roots of Peace on March 14, 2011. High level meetings with both Prime Minister Benjamin Netanyahu of Israel and President Mahmoud Abbas were organized by Roots of Peace to bring forth a historic agreement to begin the first-ever bilateral landmine removal process in the West Bank.

Roots of Peace led a delegation to Qasr al-Yahud to bring forth landmine awareness at the site where three faiths converge—Christians, Jews & Muslims.—the site where Jesus Christ was baptized by John, the Israelites crossed into Canaan, and Mohammed walked along the Abrahamic paths. Over 10,000 pilgrims travel to this holy site each January, as they pass through miles of landmine warning signs to the banks of the Jordan River.

Roots of Peace seeks to raise the funds to remove these deadly landmines, so that millions of international pilgrims may walk in peace along sacred lands.



photo



Afghanistan

This year has been one of new and continued progress for our operations in Afghanistan. 2012 saw the implementation of AGRED, a program designed to improve the capacity of the Afghan Government to address the needs of its farmers, as well as the continued progress of the CHAMP program that works with farmers to help grow and develop high yield crops that will allow them to increase their income. This year also saw great strides in our goal of integrating women into the workforce.

Afghan Agriculture Research and Extension Development (AGRED), is a capacity building program designed to increase the capabilities of the Afghan government to assist its agricultural sector. Due to years of conflict, Afghanistan's government and economic institutions lacked the ability to effectively manage the obstacles to economic development. To address this, AGRED collaborates with the Ministry of Agriculture, Irrigation and Livestock (MAIL) and its Directorates (DAILs) to increase their capacity to provide agricultural research and extension services to Afghan farmers and herders; developing increased productivity and income generation of Afghanistan's agricultural sector.

The Commercial Horticulture and Agriculture Marketing Program (CHAMP), began in February 2010 to help farmers shift from relatively low-value annual crops, such as wheat, to high-value perennial crops, such as almonds, grapes, and pomegranates. CHAMP's activities cover 18 provinces in central, eastern, southeastern, and southern Afghanistan with the objective to increase production and quality of orchard and vineyard crops for more effective domestic marketing and export. CHAMP focuses on traditional Afghan crops that have a proven market share and key value chains such as pomegranates, apples, almonds, grapes, and apricots. The program introduces simple technology, such as trellising, which dramatically increases the quality and quantity of the crop produced. Furthermore CHAMP takes steps to inform farmers about market quality standards and bring farmers into contact with traders who can transport and deliver their products to various outside markets

One of the greatest accomplishments Roots of Peace can report in 2012 is the substantial progress we have made in efforts to empower women. In a country known for a conservative culture, increasing the role of women in the workforce poses a particularly complex challenge. To address this challenge, Roots of Peace has made women's empowerment a key objective in the CHAMP and AGRED projects. As a result, women who are widowed or without husbands are in charge of their own family farms, while women who are a part of a male-run household have a part in the processing of produce such as the drying of apples and apricots. Furthermore women are now recognized as a legitimate part of the workforce in the eyes of the government. Training and developing female farms and businesses establishes a female chain of information in a culture that discourages gender-to-gender communication, allowing future generations of women to be trained and educated.

STATEMENT OF FINANCIAL POSITION¹

As of December 31, 2012

With comparative totals ay December 31, 2011

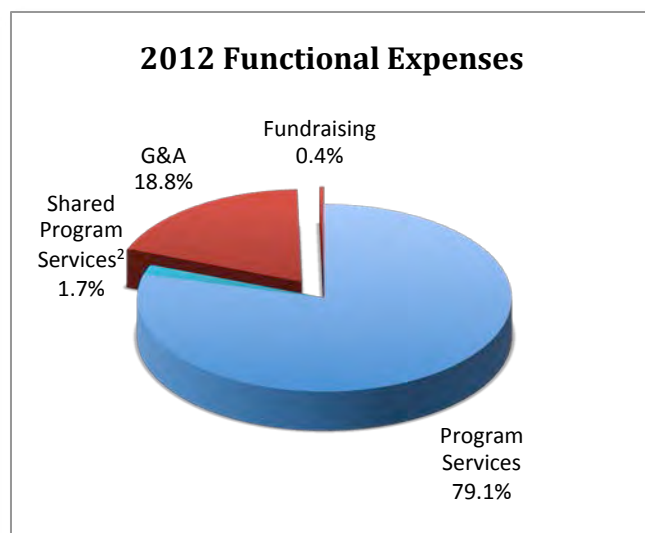
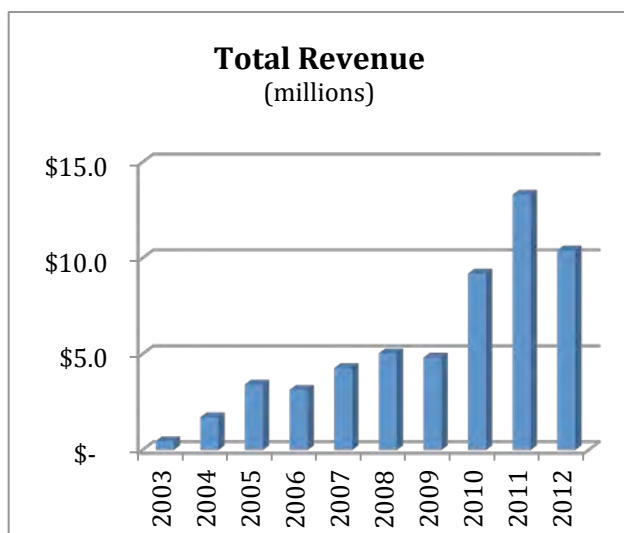
	2012	2011 (restated)
Assets		
Cash	\$590,577	\$260,473
Accounts Receivable	1,289,746	1,653,646
Notes Receivable	150,020	0
Pledges Receivable	50,000	75,000
Prepaid Expenses	67,947	55,926
Inventory	155,680	114,840
Property & Equipment	19,500	27,300
	<hr/>	<hr/>
Total Assets	\$2,323,970	\$2,187,185
	<hr/>	<hr/>
Liabilities		
Accounts Payable	\$371,648	\$686,050
Accrued Liabilities	252,308	325,554
Deferred Revenue	776,162	773,721
Line of Credit	400,000	303,161
	<hr/>	<hr/>
Total Liabilities	\$1,800,118	\$2,088,486
	<hr/>	<hr/>
Net Assets		
Unrestricted	\$473,852	\$23,699
Temporary Restricted	50,000	75,000
	<hr/>	<hr/>
Total Net Assets	\$523,852	\$98,699
	<hr/>	<hr/>

STATEMENT OF ACTIVITIES¹

For the year ended December 31, 2012

With comparative totals for the year ended December 31, 2011

	2012	2011 (restated)
Revenue		
Fees from Gov't Agencies	\$9,693,612	\$8,873,531
Program Service Fees	320,675	2,916,463
Contributions	269,252	1,001,656
In Kind Contributions	62,264	8,920
Other Revenue	26,468	4,375
Currency Exchange (loss)	466	3,091
Interest	218	133
Total Revenue	\$10,372,955	\$12,808,169
Expenses		
Program Services	\$7,865,628	\$10,136,272
Management & General ²	1,873,258	1,867,894
Shared Program Costs	170,839	681,450
Fundraising	38,077	125,998
Total Expenses	\$9,947,802	\$12,811,614
Change in Net Assets	\$425,153	(\$3,445)
Net Assets, Beginning of Year	\$98,699	\$102,144
Net Assets, End of Year	\$523,852	\$98,699



¹ Audit conducted by Job Quesada of Harrington & Associates, LLC.

² ROP manages multiple programs at our Kabul office resulting in shared costs that would normally be charged as program cost.

Managing Directors

Heidi Kühn
Chief Executive Officer
Roots of Peace

Gary Kühn
President
Roots of Peace

Ann Laurence
Treasurer of the Board
Former Chapter President
American Red Cross
Charles Ansbach
Consultant
Edward N. Bachand, J.D.
Partner, Dorsey & Whitney LLP

Diane Baker
Executive Director, School of Acting,
Motion Pictures and Television,
SF Academy of Art

Chris Benziger
President & Owner,
Benzinger Family Winery

Noel Brown
Director (former)
United Nations Environmental Programs

M. Ashraf Haidari

Jan Hartke
Senior Advisor,
William Jefferson Clinton Foundation

Tor Kenward
Owner, Tor Kenward Family Wines

Warren "Scooter" Simmons

Tom Tully
Group Director, Engineering
Organic, Inc.



Roots of Peace

990 A Street, Suite 402
San Rafael, California, 94901
United States of America
+1 415 455 8008
www.rootsofpeace.org

Ayoub Khan Mina Road
District
Near Mosque, Ayoub Khan
Mina
Kabul, Afghanistan

650 Highway 14
Tan Phu Đông Xoài
Binh Phuoc Province
Vietnam

Baghdad ♦ Bagram ♦ Baharak ♦ Bamyan

Battambang ♦ Bethlehem ♦ Bibijne ♦ Binh Phuoc

Bu Dang ♦ Ciste Male ♦ Ciste Velika ♦ Da Nang ♦ Dong Ha

Đông Xoài ♦ Dragalic ♦ Ghazni ♦ Ghorband ♦ Herat

Ho Chi Minh City ♦ Ilok ♦ Jalalabad ♦ Kabul ♦ Kandahar

Karlovac ♦ Keshom ♦ Khost ♦ Kunduz ♦ Kunar ♦ Laghman

Lashkagar ♦ Logar ♦ Luanda ♦ Mazar-e-Sharif

Mir Bocha Kot Panjshir ♦ Paktika ♦ Paktya ♦ Qalat

Quang Tri ♦ Samanghan ♦ Saripol ♦ Shohada

Tel Aviv ♦ Uruzghan ♦ Vinh Linh ♦ Vukovar ♦ Wardak

Zabul